

Wideband Dual-Polarised Omni Antenna

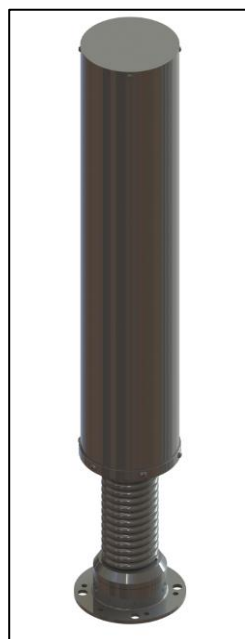
1350 – 2310 MHz

VERSION: 1.5

Product Code: OMNI-A0290



OMNI-A0290



OMNI-A0290-02

PRODUCT FEATURES:

- Collinear design gives improved gain
- Low VSWR across the band
- Rugged and lightweight

APPLICATIONS:

- Communications
- Monitoring

SPECIFICATIONS:

| Product codes: | |
|---|--|
| OMNI-A0290 | MIMO antenna with mast mounting bracket |
| OMNI-A0290-02 | MIMO antenna with spring base |
| Electrical: | |
| Frequency range | 1350 – 2310 MHz |
| VSWR | < 2.1 |
| Gain | 3dBi (typical) See graphs for more detail |
| Azimuth ripple | HP: < 1.5 dB VP: < 2.5 dB |
| Port-port isolation | > 40 dB |
| Feed power handling | 10 W maximum |
| Polarisation | Dual Polarised |
| Nominal input impedance | 50 Ω |
| Connectors | 2 x N-type female |
| Groundplane requirements | Groundplane independent |
| Mechanical: | |
| Dimensions: | |
| OMNI-A0290: | Ø120 mm x 640 mm excluding bracket |
| OMNI-A0290-02: | Ø120 mm x 840 mm |
| Total mass: | |
| OMNI-A0290: | < 2.5 kg |
| OMNI-A0290-02: | < 5.2 kg |
| Mounting method | Mast-mounted |
| Environmental: designed to meet the following specifications | |
| Wind Survival | Designed to withstand 160 km/h |
| Temperature range | Designed to withstand -30 °C to +70°C |
| Ingress protection | Designed to IP66 |

PRODUCT DESCRIPTION:

The OMNI-A0290 is a 1.35 to 2.31 GHz dual-polarised omni-directional collinear antenna with groundplane independent radiator and wideband, high-gain performance.

The antenna utilises two collinear dipole arrays with integrated balun, making it groundplane independent and suitable for use on a mast.

Wideband Dual-Polarised Omni Antenna

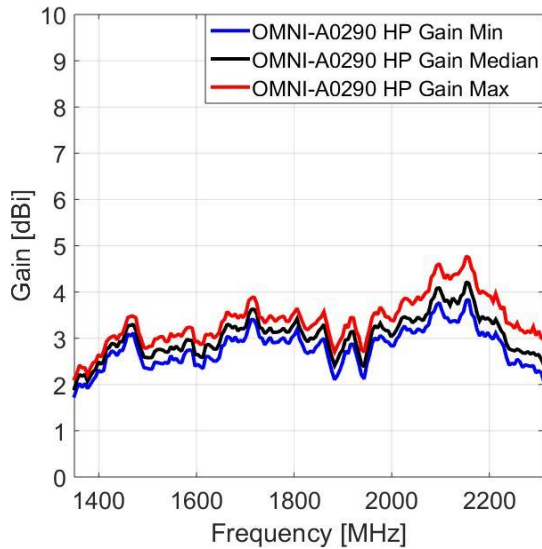
1350 – 2310 MHz

Product Code: OMNI-A0290

VERSION: 1.5

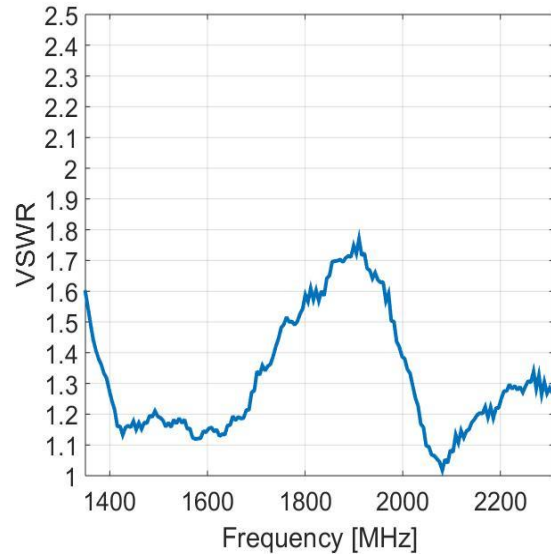
GAIN:

HP:

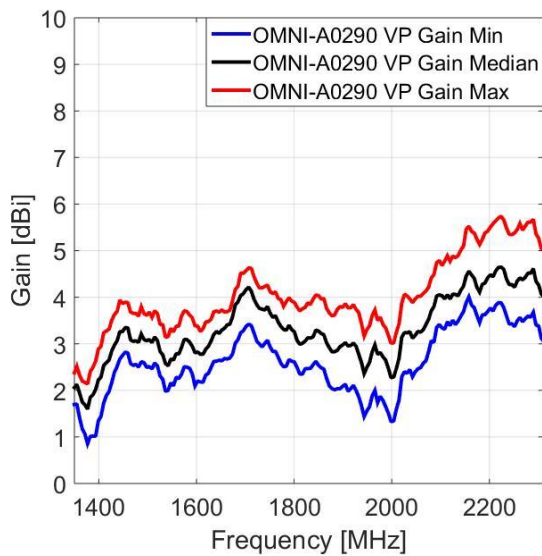


VSWR:

HP:



VP:



VP:

